



Version: 20170528

Contents

I. Introduction	1
1.1 Application	1
1.2 Power source	2
1.3 Memory card	3
1.4 USB /TV functions	5
1.5 Precautions	6
II. Camera overview.....	8
2.1 Front view of the camera.....	8
2.2 Internal structure of the camera	9
III. Quick Use camera	9
3.1 Quick view for camera working	10
3.2 Quick view for 3G mobile working	11
IV. Functional definition on Setup Menu.....	15

V.	Mobile Network functions	24
5.1	Remote control operation procedure by SMS	24
5.2	PC client software aid	26
5.2.1	Camera parameters setting	27
5.2.2	Network parameter setting	28
VI.	Main performance and technical parameters of the product	33
6.1	Main functions	33
6.2	Technical parameter	36
VII.	Keypad operation	39
7.1	"REPLAY" key	39
7.2	Initial System setup	41
7.2.1	Timer setting	41
7.2.2	Language	42
7.3	Firmware Upgrade	42
7.4	Frequently Asked Questions	43
7.4.1	Camera can't start and functioning incorrectly	43
7.4.2	Mobile problem: Camera can't get the picture /SMS /MMS	43
7.4.3	Camera performance enhancement	Error! Bookmark not defined.
7.5	Factory default settings	45
	Appendix I: Standard Packing List	466

I. Introduction

WildspyCam 3G wildlife camera (also known as wireless hunting camera / 3G SIM trail cameras) is an wireless infrared detection device with 3G network and also support 2G. It is triggered a movement of animal or human who detected by Pyroelectric Infrared sensor (PIR). Any change of environment temperature caused by movement of animals in observation area triggers completion of photographs or video automatically. The detection photos could be sent by the camera to a mobile phone or mailbox via 3G network. You also can send commands remotely through any cellphone to camera to update setting of scouting achieved by SMS.

1.1 Application

- A · The product can be used by hunting enthusiasts to detect animal and animal infested areas.
- B. Ecological photography enthusiasts, wildlife protection volunteers, etc. can use it for outdoor automatic image shooting.
- C · It can be used for growth observation of wildlife and plants.
- D · It is also installed indoor or outdoor, monitoring home, supermarket, construction site, warehouse, community

and other places.

- E · Forestry units, forest police can use the product to detect stealing and illegal hunting, as well as for evidence obtaining.
- F · It can be used in other aspects for evidence collection.



Notes to users:

Please read the instructions carefully before using this product, so as to avoid unnecessary loss!

Do not disassemble the camera arbitrarily. Except for product quality problems, the manufacturer does not take any responsibility for damage caused by users!

1.2 Power source

AA(UM3) battery or external power adapter as well as Solar Power Pack SO6-3W shall be available for power supply to this product.

A. Battery-powered: Please use high quality alkaline battery, Ni MH battery or rechargeable battery. It supports two banks of battery installed to this camera, 4 batteries in each set. 8 batteries are

advised to install in order to enhance camera operation to last longer.

Note: Please pay attention to the battery polarity during installation.

When you do not use the camera for a long time, must take all batteries out to avoid any liquid leakage to camera portion accidentally. Once observing battery capacity is low, please replace all of them completely in time.

B. External power supply adapter:

This product supports 6V/2A DC power adapter, solar power pack.

Note: When battery capacity is low under the "TEST" mode, there will be a low power prompt shown on the screen (the battery icon at lower right corner will be displayed as empty and red "X"); If camera is already at the "ON" mode, a Red indicator will flashes for continuous 60 seconds with interval to remind you.

C. Solar Power Pack:

You can purchase our Solar Power Pack SO6-3W. Refer the instruction manual from the Solar Pack attached to complete an easy installation, plug the power to the external power port on the camera. You will no longer worry about battery might run out in the field.

1.3 Memory card

SD card is used in this camera for image storage, the maximum capacity of 64GB. In order to ensure that the camera can achieve the best performance, please use the SD card of 10 Speed or above; when the camera is turned on, please do not remove the SD memory card, battery and power supply plug!

Note: Before inserting the SD memory card, it is recommended to format the SD card which it is the initialized usage, push the card

lock protection to UNLOCK, and to insert the SD memory card correctly according to the logo facing up.

The following table lists of the maximum photo numbers and the length of the video by different capacity SD cards (the value is for reference only). You can choose to buy the appropriate SD card of different capacity based on your requirement.

Image amount stored in SD cards with different capacity.						
	2GB	4GB	8GB	16GB	32GB	64GB
Photo number (piece)						
3MP	1644	3320	6746	13234	28055	53752
5MP	1026	2072	4212	8262	17514	33557
8MP	647	1307	2656	5210	11054	21162
12MP	424	856	1740	3414	7238	13868
16MP	320	646	1314	2578	5465	10471
Video length(hour)						
1080P	00:16:1	00:32:5	01:07:0	02:11:3	04:38:5	08:14:0
	6	6	0	3	5	1
720P	00:34:3	01:09:5	02:22:0	04:38:5	09:51:1	16:05:2
	5	3	5	3	2	0
WVG A	00:44:3	01:30:0	03:03:0	05:59:2	12:41:4	19:52:5
	4	4	6	0	4	6
VGA	00:52:0	01:45:1	03:33:5	06:59:5	14:50:0	22:32:2

	6	5	8	4	5	2
10-second video quantity (segment)						
1080P	97	197	402	789	1673	2964
720P	207	419	852	1673	3547	5792
WVG A	267	540	1098	2156	4570	7157
VGA	313	631	1283	2519	5340	8114

1.4-1 USB function:

This product can be connected to computer or TV with USB interface.

The camera is connected with the USB interface of the computer through an USB data cable, the camera display screen displays the USB connection symbol, and all operation keys will be invalid in this mode.

Find the removable disk in "my computer", in order to read and write the entire SD card in the camera through the computer.

Note: When the camera is in the OFF mode of shutdown and without other power supplied, USB connection is still operational.

1.4-2 TV function:

When the camera is successfully connected to the RCA via the TV cable, switch to the "TEST" mode for test preview. If "REPLAY" is

selected, the image files in the camera can be browsed in TV.

Note: When the TV is connected, the camera display screen will be turned off automatically!

1.5 Precautions

- A. Under the "TEST" mode, the camera will shut down itself when times out that there is no any key-in operation. If you want to continue to use, simply turn on the function switch knob again to the "TEST" mode. Users can set the desired auto-shutdown time-out of camera.
- B. In case during the software is upgrading, must ensure to remain the power is on without cutting-off accidentally. After a completion of upgraded, there shall be at least 5 seconds maintained power off after camera is shutdown. Otherwise it may cause a failure of upgrade. If current upgrade failed, repeat the same procedures to upgrade again.
- C. When installing the camera, please ensure there is no moving object within 3 meters range in front of camera, such as tree branches, leaves, weeds, ropes, ribbon and other objects fluttering in the wind, it is because to avoid mistakes to cause the camera to take pictures continuously.
- D. Avoid to install the camera closing to the heat source of large boiler, air conditioning exhaust, lighting, etc., hot

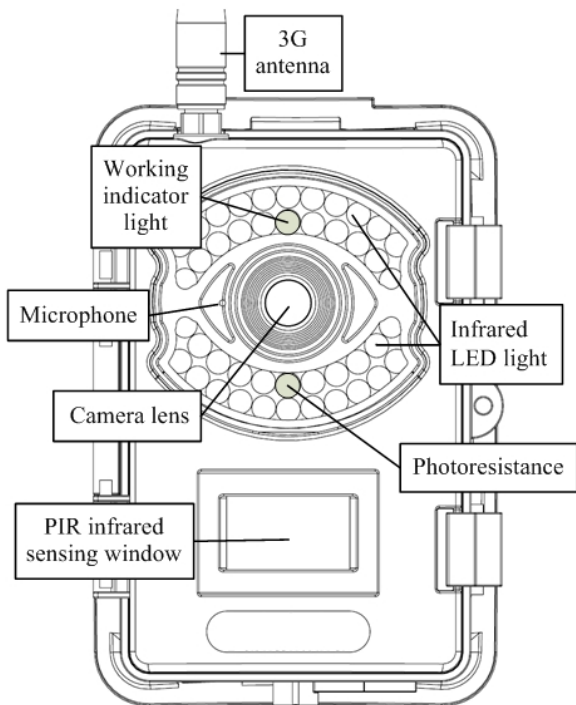
environment will reduce the camera PIR sensitivity for taking pictures or shots with mistake.

- E. Never apply any voltage or current value which out of the requirements while using an external power supply, any improper usage will damage to the camera.
- F. System power will always maintain the camera clock running, Calendar settings will keep working until battery dead and it will resume for factory default. Then, after powered again, it is needed to re-configure for the current time and date.
- G. Under the TEST mode, when the mobile network is in searching, the display screen will be turned off. Meanwhile, the Red and Blue status indicators will start blinking. Once the mobile searching is completed, display screen will resume to show the mobile signal status consisting how strength and mobile system for the SIM in the lower left corner on screen. But while power switch is back ON next time, the prior mobile status information will be always hidden. You have to trust your mobile network is fine in the same location. Once you attempt to move to a new place for working, you need to check network again by run Net Searching in the system menu. If failed to connect to a

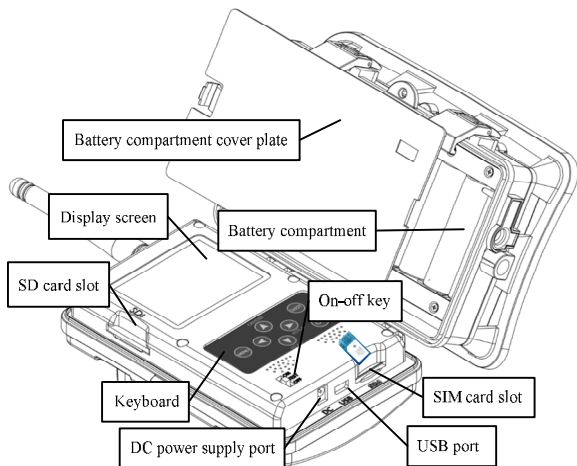
mobile network, it will show what is wrong.

II. Camera over view

2.1 Front view of the camera



2.2 Internal structure of the camera



III. Quick Use Camera

Power switch:

1. When turn it to ON, the camera goes for scouting mode. (while entering into the working mode, the Red status indicator will blink for 6 times, and the Blue status indicator will blink for the 3 times). Camera will be on duty for detecting event after it is ready.

2. When turn it to TEST, the camera goes to the Test mode for PIR walk-test in order to know how far this camera will detect a movement. You also finish setup for all the system and scouting

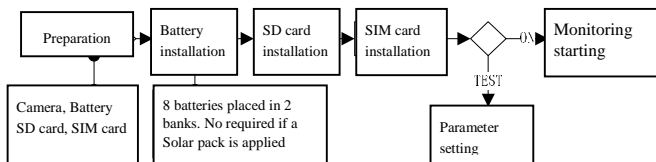
parameters, or take instant photo or video manually as well as playback the photos and videos stored in memory card. Camera will be goes to power OFF after time-out if no more key-in operation. During time-out state, if you want camera to display again, just turn it OFF and back ON. After setup is done, slide the power to ON.

3. When turned to OFF, the camera stops operation during power is OFF. But calendar will still remain working.

Walk Test to determine PIR sensitivity

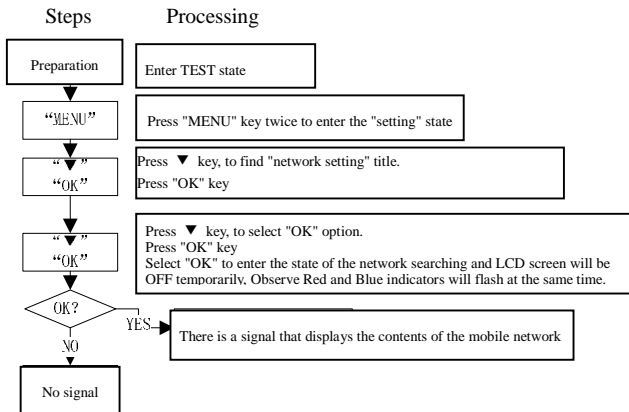
Turn Power Switch to TEST, walk in front of camera to see how long and what entry angle of detection range by a blinking Blue LED to tell you a result. Just set the PIR sensitivity to get a difference result.

3.1 Quick View for Camera Working



3.2 Quick View for Mobile Networking

1. Check Mobile network signal

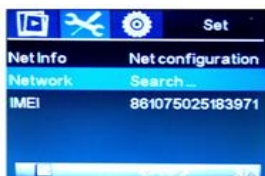


Once you have seen a signal as usual as your cellphone, then ,
Congratulation! But it is not means camera can send images or SMS
now. You still are required to do next steps for the further network
setting on the Chapter V (5-1; 5-2).

Note: The current mobile state will be shown only after running
network search command each time. This mobile information will
be always hidden in next time of power back ON because the mobile
module will works only while camera will send image or SMS after
detected an event.

If “No Signal” is indicating, that means you have to check your SIM

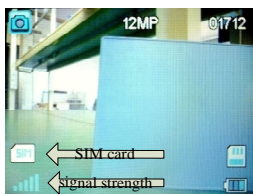
if it is installed properly or need to set up manually with APN details which are provided by your local mobile provider.



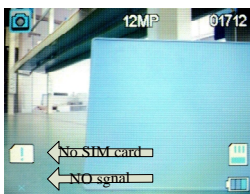
Network searching



Confirm to start network search



SIM card works, good signal



SIM card not found. No signal

When there is no signal or failure of network search, it is proposed to change the camera position; re-plug SIM card again; and check whether the SIM card has arrears. You might need to check if the mobile networking will be supported or not.

If the signal shows as not as usual after a few times to check up and you proof all steps without any error created during your

configuration, please send the Debug file.txt file which you can find it in this SD card to our technical support through support@wildspycam.com for troubleshooting. Also, please consult your dealer for the support details.

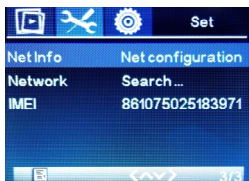
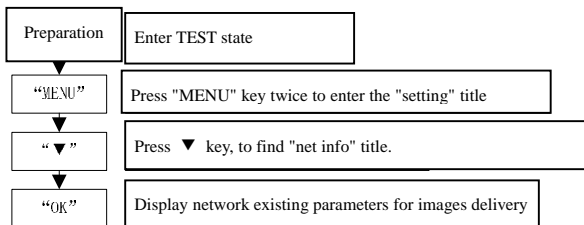
2. Network signal strength /Type

Network signal strength /Type is displayed in the camera as: (transmission speed from low to high)

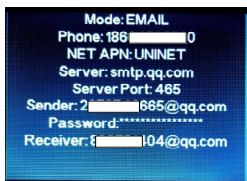
- G GSM (2G)
- E GSM W/EGPRS (2G)
- U UTRAN (3G)
- D UTRAN W/HSDPA (2.5-3G)
- W UTRAN W/HSDPA (3G)
- H UTRAN W/HSDPA and HSUPA (3G-4G)



3. Check the network existing parameters for images delivery



Network information
view

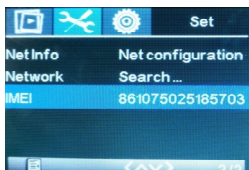


Network information
display

Above Net Information on a screen shot is supposed you have done for the steps on Chapter V (5-2), otherwise, those are the template as the factory default.

4. Check 3G module IMEI

Communication 3G module IMEI code is queried on the menu automatically. It is an unique of your camera 3G module identity serial code. At an initial using, it will be displayed after a searching network. You are not required to assist on this parameter. It might be required to trace your camera during our technician is helping for technical support while in-need. You might be required to report your IMEI code in case you are asking for instant support.



Start on Duty for trail

Now it is suppose you have done for all steps on Chapter IV (4); V (5-1; 5-2) ; 7-2-1/ 7-2-2 and other general initial setup. When they are completed, the power switch is required to turn to the "ON" from OFF state, then, camera is working at trail mode. Don't forget to close the cover and ensure to tighten the latches before left.

IV. Functional definition on Setup Menu

If you are a new user without any scouting experience to use a trial camera, it isn't a matter. Just skip this Chapter and remain the factory default, you will still get many perfect images or videos. But, variety of tailor made options will be more fitted for the most of experienced users.

Press "MENU" key to cyclic 3 Title Tabs. Press ▲ or ▼ key to move the cursor for selecting a variety of function options. Press ◀ and ▶ keys to choose desired parameters. Press "OK" key for confirmation. Press "EXIT" key to return to previous menu or exit the menu. Press "REPLAY" key to enter playback mode. (You will see more description on Chapter VII (7-1))

Bold text in the table is the **factory default** value.

You will finish all general system setup here. But you also have a

way to fill the parameters through a PC after running a PC-Client software. (See details in the Chapter V ; 5-1).

Note: Your present manual settings will be over write by PC-Client aid if you will generate a camera configure file “**CameraSet.cfg**” into your SD card.

Parameter	Setting option (Bold = factory default)	Function description
Image Tab		
Mode	Camera / Video / Camera + Video	"Camera + Video" is to take continuous photos according to the preset number of photo shooting, followed with video shooting at the preset length on the same target.
Image Size	3MP/5MP/8MP/ 12MP/16MP	High resolution can improve the definition of the photo, but it will take up more storage space, more time for file storing.
Video Size	VGA/WVGA/ 720P/ 1080P	High resolution can improve the definition of the video, but it will take up more storage space, with the

		longer file storage time.
Burst Event Shooting No.	1/2/3/4/5/6	In the burst shooting setting, picture number of continuous capture is based on values set by users. <i>Note: If a photo resolution is set for 16MP, then only the 3 consecutive pictures can be taken at the maximum.</i>
Video Length	5 seconds /10 seconds /15 seconds /20 seconds /30 seconds /45 seconds /1 minute /2 minutes /3 minutes /5 minutes /10 minutes	The video in MOV format can be played in the most video players.
Set Tab		
Device No.	WILD	4 characters available only; each character can be selected optionally from 0-9, A-Z. The equipment number becomes the first 4 characters

		of image file name. When viewing pictures, it can help users identify in-used camera used to shoot pictures.
Timer	Off/On	It is used to set the working time of the camera. Beyond the time set, the camera will not work. See 7.2.1 for details
PIR Interval	Off/ 3 seconds /5 seconds /10 seconds /15 seconds /30 seconds /1 minute /2 minutes /5 minutes /10 minutes / 20 minutes /30 minutes /1 hour	Pause Time setting. When a shooting is triggered, the camera will no longer be triggered during the PIR interval. After the pause period is over, the PIR will resume the standby state to scan event.
Time Lapse	Off/ 5 seconds /10 seconds /15 seconds/ 30 seconds /1 minute /2 minutes /5 minutes /10 minutes/ 20	The camera could be set for scheduled shooting during set time interval for time lapse shooting purpose.

	minutes /30 minutes /1 hour /2 hours /6 hours /12 hours /18 hours /24 hours	<i>Note: Once this function is turned on, the camera will not start infrared automatic sensing for shooting. * Refer to Appendix I</i>
Stamps	Off/ On	If it is turned on, there will be a LOGO, temperature, moon phase, date, time displayed below on each picture.
Power Saving	Off/ On	Turned it on, there will be 20 built-in lights for working with a lower PIR level. It will reduce illumination for night shooting within a short range in order to avoid over exposure on a target.
Auto Power Off	1 minute /3 minutes /5 minutes /10 minutes	Power off time out w/o keypad touched @Test mode
Record Audio	Off/ On	To turn it on, there is a sound recording with video clip.

PIR Level	Low / Normal / High	Set the PIR sensitivity based on in-need.
(Media) Sending Interval	Off/ instant /5 seconds /10 seconds /15 seconds /30 seconds /1 minute /2 minutes /5 minutes /10 minutes / 20 minutes /30 minutes /1 hour	<p>Once a photo is taken, and then the camera does not take another photo within the set time interval, the camera will send the photo (by Email or MMS) or message (SMS mode is enable) according to the set time interval; When it is turned off, pictures will not be sent through network.</p> <p>Note: In the case of low power, the camera will not work with mobile module. It will cause failure for picture sending. During time lapse is selected, immediate sending will be resumed to default. The "OFF" is selected; Mobile network function will</p>

		be forced to Off.
Net Info (Network Information Monitor)	Check mobile networking configuration parameters	Press “OK” key to display information of current mobile network status, receiving phone number of SIM; 3G operator; mailbox server; server port; sending mailbox Account; sending mailbox password; receiving and CC e-mail address, etc.
Network (Net searching)	Search for Mobile signal	After pressing "OK" key, the screen will show the menu. Select "OK" option, the screen display will be turned off and the mobile will search the network signal at the location of the camera. After searching, the screen will be turned ON again and signal strength is displayed at lower left screen

IEMI	Auto-Query	Display the IEMI code for the equipped 3G module
System Tab		
Format	SD card	Format SD card during initial usage with a SD card which never be used in this camera.
Set Clock	2017/01/01 00:00	Set the system calendar of the camera.
Default Set	Factory	Restore all settings to factory defaults.
Language	English	Support multiple languages: See 7.2.2 language
Beep Sound	Off/On	Turn on / off for a key sound.
Loop Recording	Off/On	When the SD card is full, it will overwrite the previous images or video clips
TV Mode	PAL/NTSC	When the camera is connected to the TV, set the local TV broadcast system.
Password	1234	4 characters, arbitrarily selected in 0-9. You must

		save the PW in a safe place. In case it is loss, contact your dealer..
Software Ver.	G3__01_6.1.01	G3: Camera model; 01: Language Section; 6.1: Software version number; 01: Customized software version number.
Playback Tab >> By pressed REPLAY to enter		
Delete	Delete current / delete all	Delete a single or all images
Protect	Lock current / unlock current / lock all / unlock all	Lock an image that you won't it to be deleted. After unlocked, it could be removed. Ideal for protection against important images to avoid any accidental deletion.
Slide Show	3 seconds /5 seconds /8 seconds	Interval for viewing entire images. Display the slide show as set interval time.

V. Mobile Network functions

You have to finish all setups on this chapter before attempting to get scouting images and videos through a local SIM mobile network. Otherwise, you can skip mobile settings and the camera will work stand alone as other non-3G WildspyCam models.

5.1 Remote control operation procedure by SMS

Whatever if you have done for SMS settings on the Chapter V (5-2), you are still able to modify the following settings in camera through SMS from any cellphone remotely. Simply follow the Rule format to send a command one by one through SMS to modify either desired data to fit your application. Once this camera received a SMS from your mobile, system will be updated with the new data to perform the new profile. Old profile in camera will be over-write. All parameter settings beginning with:

"#" for separation; "=" followed with parameters; "*" at the end.

S/N	SMS instruction	SMS Template Command
21	Password setting: Letters (26 pcs), numbers (10 pcs)	#21=1234*
22	Network mode: Turn off (0), SMS (1), Email (2), MMS (3)	#22=0*

23	Receiving phone number:	#23=1234567 8901*
32	Receiving mailbox:	#32= xxx@gmail.com*
33	CC mailbox:	#33= xxx@gmail.com*
35	Image format: 1 (original), 2 (thumbnail)	#35=1*
36	SMS mode: 1 On, 2 Off	#36=1*
38	Transmission interval: Immediately (1), 5 seconds (2), 10 seconds (3), 15 seconds (4), 30 seconds (5), 1 minutes (6), 2 minutes (7), 5 minutes (8), 10 minutes (9), 20 minutes (10), 30 minutes (11), 1 hour (12), off (13)	#38=1*

- I After the camera is set with remote SMS, a message will be sent to the mobile phone once the camera restarts next time,
- I Safety (Status) Alert SMS function: During camera is working on duty, if there is no any shooting over 12 hours, then the camera will send a message to your phone by a SMS to report the current state of the camera (including: time; energy

remaining; storage capacity etc.) suppose the SMS is enable.

5.2 PC client software aid

All users are required to finish this chapter before using the 3G mobile network function. You can skip it if you don't need 3G network to send any SMS; MMS or Images /Videos. The PC client application software must be downloaded from the website and unzip it to your PC specified directory. Just run the AC-3-G3set.exe program on Win7 / Win8 / Win10 and fill the form for each field.

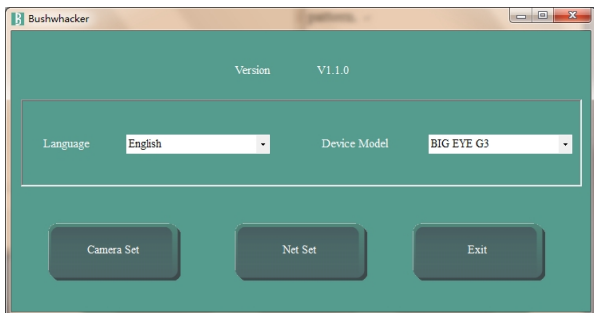
(www.wildspycam.com/download/AC-3-G3set.zip) .

XP user will be required to install one more file before running it on WinXP. Get a further support from the web and download it for www.wildspycam.com/download/G3set-xp.zip.

After done for this form filling and is saved to the prepared SD card, camera will read these data for initializing your 3G camera during the 1st time to be used. Ensure your SIM card must support WCDMA protocol. (a kind of mobile system)

Fill in the data step by step:

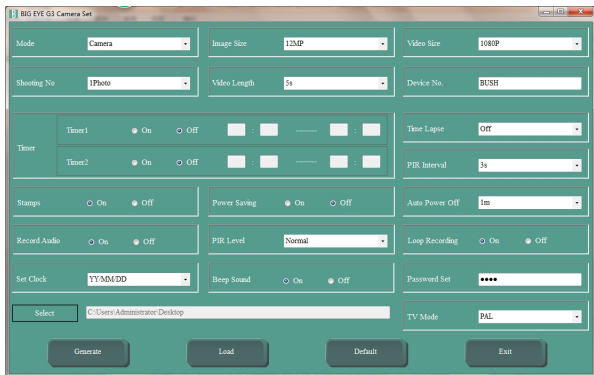
Select language, camera model No.



By default, you can remain English and Model: BIG EYE G3

5.2.1 Camera parameters setting (Optional required on this interface if you have done settings in the camera setup menu. Click the Net Set button to skip this Camera Set chapter)

Click the proper settings for the corresponding parameter fields.



After done form filling, click on the "Select directory" to define where the file will be saved. Click "Generate" to create a camera system configure file. Then, click "Exit" for the main menu interface.

Copy above system configure file named "**CameraSet.cfg**" to the SD card. Then, continue to the NET Set for further network setting.

Caution: if you have done for this chapter V full sections, there is no need to setup manually through your camera setup menu. Anyway, this configure file will over-write what you did on the setup menu of camera previously. If you want to remain the prior settings, don't copy the file "**CameraSet.cfg**" to the SD card.

5.2.2 Network parameter setting (Must be required to fill this chapter if you request 3G mobile function to work)

Click **Net Set** for the following network parameter interface.

Fill Mode: Auto
 Country: China
 Operator: China UNICOM
 Picture Type: ☒ Original ☐ VGA
 SMS: ☒ On ☐ Off
 Send Interval: instant
 Phone Number: *8618...664
 MMS APN: uniwap
 MMS URL: http://mmmc.myuni.com.cn
 MMS Proxy Address: 10.0.0.172 MMS Port: 80
 APN Account:
 APN Password:
 NET APN: UNINET
 Send Server: smtp.qq.com Port: 465
 Send Name: 20...65@qq.com
 Send Password: *****
 Receive Name: 32...58@qq.com
 CC Name: 8...24@qq.com
 Select: C:\Users\Administrator\Desktop
 Generate Load Default Exit

Select the "Auto" mode for a mostly choice. After selected the country; operator, the intelligent robot will fill other network parameters which found from the system database for you. But you still need to enter your personal details depending on your applications on 3 kinds of sending methods as below: (If there is no data base found, some or all parameter fields will be empty, you have to choose the "Manual" mode to fill in all fields completely)

Basic Mobile Network parameters:

Country and Operator are required to fill for all options whatever you will choose. In case you can't find either your country or operator name from the pull-down manual, it means your entire networking information is not in our data base and you have to choose "manual" in the Fill Mode. Then, fill in the **NET APN**

(Access Point Names).

Noted: Net APN can be found with 2 ways:

1. Install the SIM card in to your cellphone, >Settings>Mobile networks>Access Point Names>xxxx.xxx , Take a snap shot for a reference later.
2. Call your mobile provider or surf on their web >Technical support page>Mobile Settings>; or search a key word with APN for xxxx (Name of your mobile provider for this SIM).

Email mode parameter setting

Click Email indicator to define your mailbox to get images. You have to fill in with all information exactly same as your mobile how to send an email to someone usually:

Send Server (your email smtp server);

Port (Refer your email setting under above smtp server);

Here are some information for reference to most well known email services:

25 for outlook /mail / gmx / godaddy

465 for gmail / yahoo / hotmail /qq / AOL / gmx / yandex / yoho /godaddy

587 for outlook-office 360 /1and1 / AOL / mail / icloud /yoho

Send Name (Your email account which under above smtp server to send images);

Send Mailbox Password (Your email account password);

Receiving mail (A target email box to get images);

CC mail (Alternate email box to get images);

Send Interval (Defined how to send the images);

The default is to send a thumbnail without a message notice. If the original images and SMS notification are needed, just choose other options at same time to enable both working together

SMS mode parameter setting

Click **SMS** indicator to define you need SMS alert while camera take a shooting and you will perform remote the camera function.

In this mode, it is required to set for:

Phone Number (A target cellphone to get SMS alert from the preset text in camera);

Note: Phone number format must be " Plus+ Country code then mobile No ". Example: "+85297715888" (852 is Hong Kong)

Send Interval (Same as email setting);

MMS mode parameter setting (only enable it if you just have subscribed for 2G network or very worst 3G data plan)

Firstly, you are ready all MMS information from your local mobile provider. If you do not have yet, try to search by such key word “ MMS URL for xxxxx (Your mobile provider’s APN)”

Click **MMS** indicator to define you will get images through **MMS**.

If you are using 3G data plan, you can ignore this chapter. With MMS sending, only picture thumbnails will be sent due to a very slow transmission speed for uploading.

It is needed to fill with the fields as below:

Phone Number (A target cellphone to get images by MMS from the camera);

MMS APN (Mobile operator's APN specially for MMS service, it is not same as the Net APN normally);

MMS URL (Mobile operator's **URL** specially for MMS service, call your operator or search on web for this detail);

MMS Proxy Server (Depend on if operator will require, ask your operator or search on web for this detail);

MMS port (Must ask your operator or search on web for this detail);

Send Interval (Same as email setting);

In some countries, it is required to fill out the **MMS APN Account**, **MMS APN Password**. If there are no requirements for operators, the two parts can be empty.

During you are filling the form, you might observe field title is not the same as operator defined or confusing for any, consult your local Mobile operators who is providing the SIM on this camera or your local dealer. Also you can send email to support@wildspycam.com

After done for parameters entering completely, click the "Select Directory" for the desired directory to save file. Click the "Generate" to output a network configure setting file **NetSet.cfg**. Click "Exit" for the main menu.

5.2.3 Transfer Configure data to camera

Copy the network parameter configure setting file named **NetSet.cfg** from above desired directory to the SD card. Meanwhile, there are two configure files in the SD card already. Simply to insert it to the camera and turn the Power Switch key to TEST, then the camera will be initialized with the Camera / Network configure parameters that you did them in PC from the SD card during the 1st time used. If you will replace with a new SIM card other than the current mobile provider or want to modify any data for Email/SMS/MMC, a same processing will be always required.

VI. Main Functions and technical parameters

6.1 Main functions

- 1) Picture pixels: 3MP/5MP/8MP/12MP/16MP.
- 2) HD video: 1080P 30 frames per second. Video is set with sound.
- 3) In the "camera + video" mode, once an event is detected, the camera will take pictures firstly and always record a scene video later.

- 4) 42 infrared LEDs. Set with power-saving mode, only 20 infrared LEDs will work;
- 5) Shooting speed at 0.5 seconds
- 6) 2.4' TFT color LCD screen.
- 7) Image locked function.
- 8) Burst shooting up to 6 pictures.
- 9) Preset working period every day up to set two timers.
- 10) PIR pause function that it avoid a multi shots for the same object.
- 11) With a time lapse function, the camera will be set for interval shooting on scheduled to take pictures automatically. It is very useful to capture the flowering of plants, birds nest, as well as monitoring unattended places, such as parking or garden under security.
- 12) Auto-Power Off within 1-10 minutes while there is no keypad operation under TEST mode.
- 13) Date, time, temperature, moon phase and battery capacity can be stamped in picture and video.
- 14) Few operation buttons with beep sound while either one is pressed
- 15) TV out compatible for PAL/NTSC.
- 16) Maximum 64GB SD memory card is supported.

- 17) Low standby power consumption, up to 6 months for standby.
- 18) Low battery alarm, there is a low power icon on the screen with a blinking red light.
- 19) Playback at 1~8 zoom for clear viewing.
- 20) Speed browsing for nine thumb pictures per frame and play back with slide show.
- 21) Device number will be showed on image file name, this helps to identify where images are come from a specified camera.
- 22) Password available for restricting an usage of camera.
- 23) Auto- switched for Color pictures at daytime, monochrome pictures at night.
- 24) Support for loop recording, which auto-deletes the earliest photos or videos and makes more room for new ones while memory card is full.
- 25) Dentate design is more convenient for camera mounting firmly.
- 27) The battery hatchway cover can effectively avoid corrosion damage to camera caused by leakage of battery.
- 28) Hi-Speed for Mobile transmission, transmit image via SMTP/MMS, network support GPRS / 3G.
- 29) With SMS notification and remote control functions.
- 30) Supports thumbnail or original of image transmission.
- 31) Flexible to set transmission time, optional to select the instant

sending or interval sending.

32) Set parameter on PC computer, which is more convenient to configure your 3G SIM mobile setup.

33) Safety (Status) alert message will be always sent consisting the system time; power energy, storage capacity by SMS if no event is triggered over 12 hours.

6.2 Technical parameters

Items	Parameter
Work Mode	Camera / Video / Camera+Video
Photo Size	3MP:2048×2536 ; 5MP:2542×1944 8MP:3264×2488 ; 12MP:4032×3024 16MP:4640×3480
Video Size	VGA:640x480; WVGA:800x480 720P:1280x720@30fps; 1080P:1920x1080@30fps
Working Time	Day /night, auto-induction switch
Lens	FOV=90 degree (G3R:50 degree), F=2.4 (G3R:2.5), auto-induction switch filtering
IR Flash Distance	65 feet / 20 m
Infrared Lamp	42pcs; Visible light lamp/invisible light lamp selectable

Power Saving	On/off; Only 20 lights work after opened
LCD screen	2.4 inch, TFT colors, RGB
Operation Keypad	7 buttons
Beep Sounds	On/off
Memory	SD card, maximum support up to 64GB
PIR Level	High/Normal/Low
PIR Sensing Distance	65 feet / 20 m
PIR Sensing Angle	90 degree (G3R:50 degree)
Trigger Time	0.5 seconds (when use 2 GB card)
PIR Interval	3 seconds ~60 minutes, Programmable
Timer	On/ Off, can set two timers
Time Lapse	5 seconds ~ 24 Hours, Programmable
Shooting Number	1~6 photos (1~3 photos when in 16MP)
Video length	5 seconds~10 minutes, Programmable
Camera + Video	Take photos first, and then record video
Playback Zoom	1~8 times
Slide Show	3 Second/5 Second/8 Second
Loop Recording	On/Off
Lock Image	Locked or unlock image
Calendar Stamp	On/Off, Logo, temperature, moon phase, date, time, battery power

Password	4-digit number, each digit can be freely set with 0 ~9
Device No.	4-digit number, each digit can be freely set with 26 alphabets or 0~9.
Network Band	800/850/900/1900/2100MHz
Email	Two mailboxes are set available. Message notice can be set at the same time. Either original (maximum 16M) or thumbnail (640x480) available .
MMS	Only send thumbnail (640x480)
SMS	Send message notification
Sending Interval	Instant, 5sec~1 hour, Off
Status Message Alert	No trigger for 12 hours, it will send message (time, electricity quantity, remaining storage capacity) to designated cell phone.
Standby Time	3~6 months (4×AA~8×AA)
Auto Power Off	Automatic shutdown can be set for 1~10 minutes while no key-in operation at TEST mode.
Power Source	4×AA, 8×AA Battery (UM-3) Internally
External DC Power /Solar Power Supply	6V/2A / Solar Powered: Model SO6-3W
Standby Current	0.4mA

Power Consumption	200mA(+700mA when IR LED lights up) 250mA (start network, maximum peak is 400mA)
Low Battery Alarm	4.8V
Interface	TV-out/USB, SD card slot, 6V DC power port, Mobile network antenna, SIM card slot
Mounting	Strap; Tripod nail
Waterproof	IP66
Network Module operating temperature	-40~+85°C
Working temperature	-22~+158°F/-30~+70°C
Working Humidity	5%~95%
Camera Dimensions	147.5×100×77 (mm)
Net Weight	350g
Certified	FCC & CE & RoHS

VII. Keypad operation

7.1 "REPLAY" key

"REPLAY" with other keys can achieve browsing / playing / deleting of images. Photos can be enlarged /shrunk/moved; display thumbnail; image lock/unlock; Slide-show function etc.

Image review:

Press "REPLAY" first, then, press ◀/▶ key to browse photos.

Scale, move photos and Sudoku:

When browsing photos, press "ZOOM" and then press ▲/▼ key to zoom-in or zoom-out photos. When zoom-out to the minimum, entire photos will show in Sudoku style.

After zoom-in photo, press "MOVE", then press ▲/▼/◀/▶ key for details on somewhere of picture.

During image review operation, press "ZOOM/MOVE" key can join for 2 functions among "Zone" and "Move".

When at the Sudoku state, press ▲/▼/◀/▶ key to snap on the desired image quickly, then press "OK" key to enlarge the selected image.

Video play:

When browsing video clips, operation instructions will be displayed at the bottom of the screen.

Press "OK" key to play or suspend video.

Press ▲/▼/ key to terminate a video playing.

When pressing ", " key, video will speed forward or go back with 2 times, 4times, 8 times of the play speed.

Slide Show play:

When enable "REPLAY", press "MENU" key and select "Auto Play". Press ◀/▶ key to set a slide show time with 3 / 5 or 8 seconds.

Note: In auto play mode, only support the front images of each video are displayed, the video contents will be ignored.

All images will be displayed and running in a continuous loop.

Images locked/unlocked:

The desired images can be locked which should not be deleted.

Unlock them if you want to delete either of them.

Enable "REPLAY" state, press "MENU" key, choose "image lock" option, press, "key for selecting either "lock the present"/ "unlock the present"/ "lock all"/ "unlock all".

Note: When at "REPLAY" state, the above functions will be back to the previous menu by pressing "EXIT" key, press "CAMERA", "VIDEO" keys will exit "REPLAY" state quickly, short-cut for camera or video capturing mode.

7.2 Initial Systems

7.2.1 Timer settings

Timer function will define when camera will works in particular times. Beyond timer settings, the camera is in dormant state. Two time settings are available.

System default timers:

Off, "00:00——00:00"

Off, "00:00——00:00"

Example: Set camera to operate at 8:00 to 10:00 am and 15:30 to 18:00 pm every day, the set is as follows:

On, “08:00——10:00”

On, “15:30——18:00”

7.2.2 Language

English is the system default language. You can select other languages for Deutsch/ Italiano/ Cestina. User may acquire the firmware version for the specified language from our website.

7.3 Firmware Upgrade

User may update camera firmware version through SD card if a newer firmware version is published. (Firmware will be downloaded from our website and it is required to save to a 32GB SD card).

Following procedures step by step:

- 1.Camera is turned to OFF. Prepare a formatted SD card and be sure all batteries are in good condition.
- 2.Copy the new version Firmware file “xxxx.bin” to the root directory of SD card.
- 3.Insert SD card into camera. Pressing OK key and hold it, slide ON/OFF knob to TEST mode. Released "OK" key when the Blue indicator is flashing.
- 4.During blue light flashes continuously and the screen is off, it is indicating the upgrade being in progress. So, don't power off ! If an accident is happened by power off, camera might

no longer works. But you can repeat the same procedures to attempt to rescue the main system.

5. Reboot and see if the new version number is in accordance with the instructions on the upgrade guide in order to verify entire upgrade to be successful.

7.4 Frequently Asked Questions

7.4.1 Camera can't start

- ! **No Powered:** -Check the power supply if you are using an external power or a Solar Power Pack system.
- ! Run out of battery or one of them is in wrong polarity.
- ! **System halt:** -Uninstall battery for 1min and power back ON.
- ! **SD card is damaged** or over the maximum support 64GB
- ! **Goes to Power OFF during time-out in TEST mode:**
Restart by power back on

Camera functioning incorrectly

- ! **No response to me suddenly during walk-test:** -Talk test time is restricted by the auto power OFF setting at TEST mode. Just change the "Auto Power Off" in the setup menu to extend your desired period for a walk test temporarily.

7.4.2 Mobile network has problem, camera can't send any picture or SMS or MMS

- ! **Mobile signal too weak:** Check Mobile signal to obtaining at least with 2 level or over.

- I You do not finish the Chapter V (5-2-2)** or one or more wrong information to be entered. –Check and redo.
- I SIM card is out of credit:** -Check it by a cellphone to proof.
- I SIM Operator is not supported:** -If you just changed the SIM from a new Mobile provider, you have to redo a processing for Chapter V (5-2-2) completely.
- I Battery capacity is insufficient** that the 3G module did stop.
- I Send Interval time is set to Off:** -Change it in setup menu.
- I Can't see what the current Mobile status is:** -It is normal, just run Net Search in the Menu to update the 3G status while you attempt to place camera on a new environment.
- I Can't receive MMS but SMS and Email sending are fine:-**It seems there is wrong parameter to be filled or operator does not provide such service or not be supported.
- I Can't receive image from email, but SMS is fine:** -SMS will always come much earlier than email depend on image size; network quality. Also many factors like smtp; port; email account name /password in email parameters described on Chapter V (5-2-2) will be very important for receiving email by a desired device. You can re-check all of them easily by running the Net Info in system menu.
- I How can I do because I want to correct mistake that I**

found from Net Info result? –Read Chapter 5-2-2 to fix it.

7.4.2 Camera performance enhancement

I Where can I buy a Solar Power Pack? –Check our web www.wildspycam.com to get the information for model: SO6-3W. Call your local dealer to get it.

I Any way to increase illumination on the target at night? –Yes, you can choose our IR booster series. Find our wired or wireless IR booster on our web site to improve night picture and video quality much more.

I How can I secure this camera not be stolen easily? –You are suggested to choose a steel cabinet to protect your device. Find it on our web for this item on accessory page.

7.5 Factory default settings

Image		
	Shooting Mode	Camera
	Photo Size	12MP
	Video Size	1080P
	Shooting No.	1
	Video Length	5 seconds
Basic Setting		
	Device No.	WILD
	Timer	Off
	PIR Interval	3 seconds
	Time Lapse	Off

	Stamps	On
	Power Saving	Off
	Auto Power Off	1 minute @ TEST mode
	Record Audio	On
	PIR Sensitivity	Normal
	Sending Interval	10 minutes
	Network Info	Network configuration
	Networks	Search for signal
	IMEI	Identify number of 3G module
System		
	Storage	SD card
	Date and Time:	2017/01/01 00:00
	Default Set	Factory
	Language	English
	Beep Sound	On
	Loop Recording	On
	TV Mode	PAL Mode
	Password set	1234

Appendix I: Standard Packing List

Camera	1
USB Cable	1
AV Cable	1
Antenna	1
Mounting Belt	1
Instruction Manual	1