

# Firmware upgrade guide for AC-823

updated: 24.Aug 2017

## Purpose to process this job:

You might have two reasons to be required to renew or reload the firmware for your camera.

- A. You expect to enhance your camera function or remove a bug found in camera.
- B. An unknown reason caused the original firmware was destroyed and camera works improperly now.

First of all, you need to download 3 files from our web site

<http://www.wildspycam.com/download.html>

1. First step, the FW file for AC-823 “89AMN\_tv\_n\_20140327-1.bin” is downloaded to the default directory “My document /Download on your PC. You might set it to other directory as your desired.
2. You also need to download the 2<sup>nd</sup> file for Programming tool “ISP\_AP\_552\_NAND.rar” to the same directory as above.
3. Then, download the 3<sup>rd</sup> file for Camera PCCAM driver “AC823\_853\_PCCAM\_Drv.rar” to the same directory.

Then, follow the steps to finish the processing Create the programming environment:

A. Unzip the “AC823\_853\_PCCAM\_Drv.rar” and run the executable file to install the driver.

B. Unzip the Programming tool on the general directory as C:\Programfiles\.  
Then you will get a program tool folder “ISP\_AP\_552\_NAND”.

C. Run the executable file “ISP\_1528.exe” in above Program tool folder.

D. A programming user interface will appear and show you with an instruction page. Press the [ISP] button on top to bring up another screen as the right picture

E. Click the buttons on right side to select the specified files from same Programming Tool directory as below:  
For the 1<sup>st</sup> field on top:

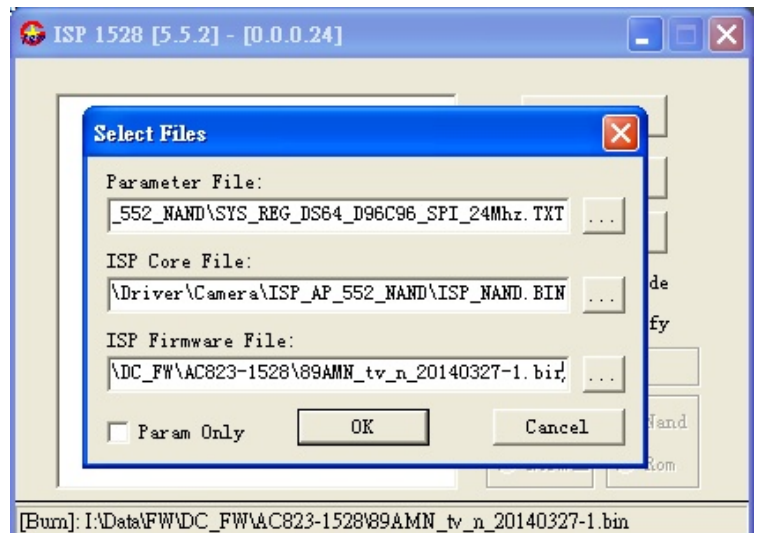
“SYS\_REG\_DS64\_D96C96\_SPI\_24Mhz.TXT”

For 2<sup>nd</sup> field: “ISP\_NAND.BIN”

For 3<sup>rd</sup> field: My document /Download/89AMN\_tv\_n\_20140327-1.bin (Note: It is not in the same directory as the fields 1 /2)

Warning: Do not touch the OK button on the selection window at this moment

F. You need to do some processing to disassemble the inner panel from the front cabinet according to the following steps:



1. Ready the Camera unit which is set to PW-OFF mode and remove the plastic screw cover by a sharp cone as the picture on right.
2. Loosed the screw by a screw driver. Then, open the inner panel and put it on the right over the battery compartment carefully.
3. Place this screw onto the centre of the jumper pins located on the right top corner of circuit board in order to make the gold pins to be short circuit. In this case, the camera operation will be forced to the Programming Mode.

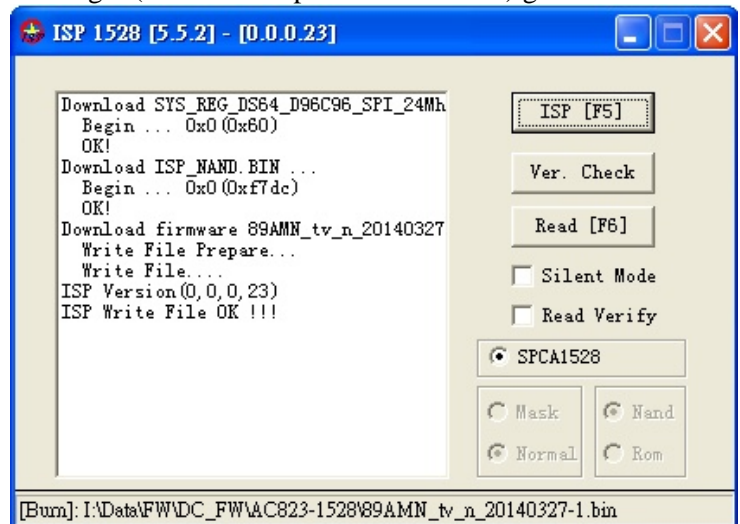


- G. Connect the USB cable to PC. Then, push the main power switch ON the unit. Meanwhile, press the CAM-PW key. Now, the camera goes to Program Mode and you will observe the small LED light is staying ON (On the front panel side to view). You need to wait for a minute until the PC will install the camera driver and completed automatically.

H. Press the OK button on the Selected File screen on PC to start the programming. Wait for a prompt with ISP Write File "OK" popup and the small LED light (On the front panel side to view) goes to OFF itself.

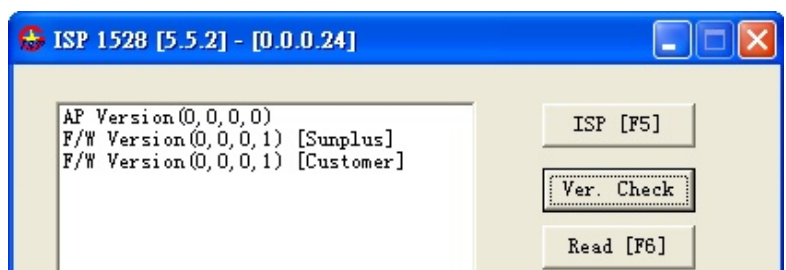
**Congratulation!** It means the FW has been upgraded successfully.

- I. Unplug USB cable and switch off the Main Power. Remove the screw from the gold pins.
- J. Resume the assembly the original as the factory default.
- K. Be careful to put 2 plastic obstructive pieces against the holes on front cabenet.



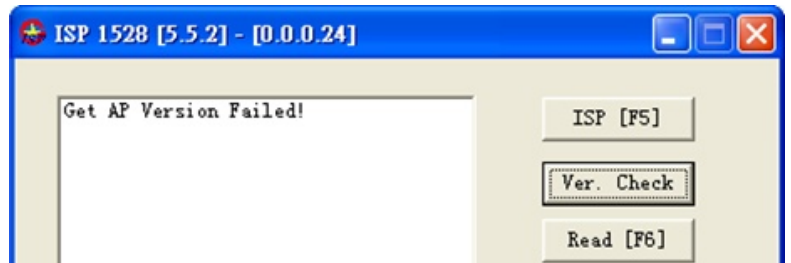
## Trouble Shoot

1. If the Step H does fail, you just need to unplug the USB from camera. And then repeat the Step G to try again. Before starting programming, you have to re-check the contents in 3 fields to be same as the advised.
2. In case you are not sure if you have installed the Camera USB driver successfully or not under the **camera program mode**, you can press the [Ver.Check] key before pressed the [ISP]. You will get a FW code as the right if driver is installed. Only a driver is installed, you can press the [ISP] to continue until to finish.



3. Once you got a result as the right prompt, you have to check if the camera small LED is staying ON. If Yes, the Camera driver was not installed properly.

If No, your operation might be wrong and the camera is not entered to the Programming Mode yet. Just need to check if the screw was staying between the gold pins properly to make two pins were shorted circuit.



4. In case you push the CAM\_PW to turn on the camera and camera keys are no function as well as the small LED remain ON, check the if a screw still be left on the gold pins.

5. Sometimes, you might install the FW successfully but you could not see the Camera screen ON and camera operation seems incorrectly. You have to check if you have installed for a wrong FW. It is not a matter. Just do it again for a programming with the correct FW.