

Firmware upgrade guide for AC-863s

Updated: 21.Oct 2017

Purpose to process this job:

You might have two reasons to be required to renew or reload the firmware for your camera.

- A. You expect to enhance your camera function or remove a bug found in camera.
- B. An unknown reason caused the original firmware was destroyed and camera works improperly now.

First of all, you need to download 3 files from our web site

<http://www.wildspycam.com/download.html>

1. First step, the FW file for AC-863s “92-20150212wa.bin” is downloaded to the default directory “My document /Download on your PC. You might set it to other directory as your desired.
2. You also need to download the 2nd file for Programming tool “ISP_AP_552_NAND.rar” to the same directory as above.
3. Then, download the 3rd file for Camera PCCAM driver “AC823_853_PCCAM_Drv.rar” to the same directory.

Then, follow the steps to finish the processing Create the programming environment:

- A. Unzip the “AC823_853_PCCAM_Drv.rar” and run the executable file to install the driver.
- B. Unzip the Programming tool on the general directory as C:\Programfiles\. Then you will get a program tool folder “ISP_AP_552_NAND”.
- C. Run the executable file “ISP_1528.exe” in above Program tool folder.
- D. A programming user interface will appear and show you with an instruction page. Press the [ISP] button on top to bring up another screen as the right
- E. Click the buttons on right side to select the specified files from same Programming Tool directory as below:

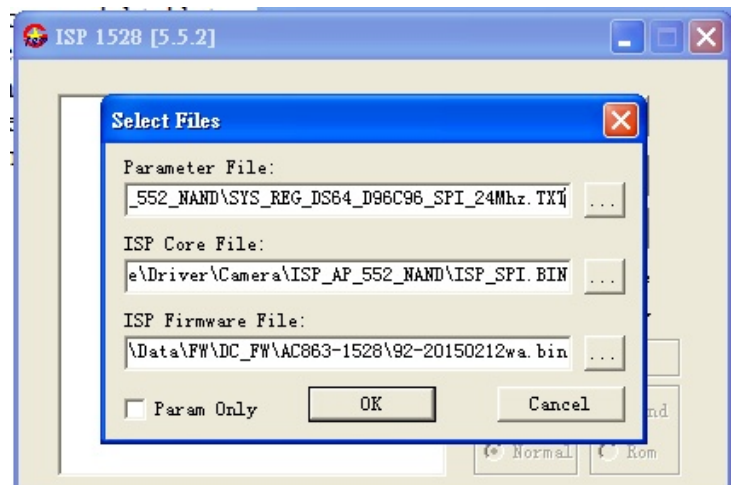
For the 1st field on top:

“SYS_REG_DS64_D96C96_SPI_24Mhz.TXT”

For 2nd field: “ISP_SPI.BIN”

For 3rd field: My document /Download/92-20150212wa.bin (Note: It is not in the same directory as the fields 1 /2)

But do not touch the OK button on the selection window at this moment.



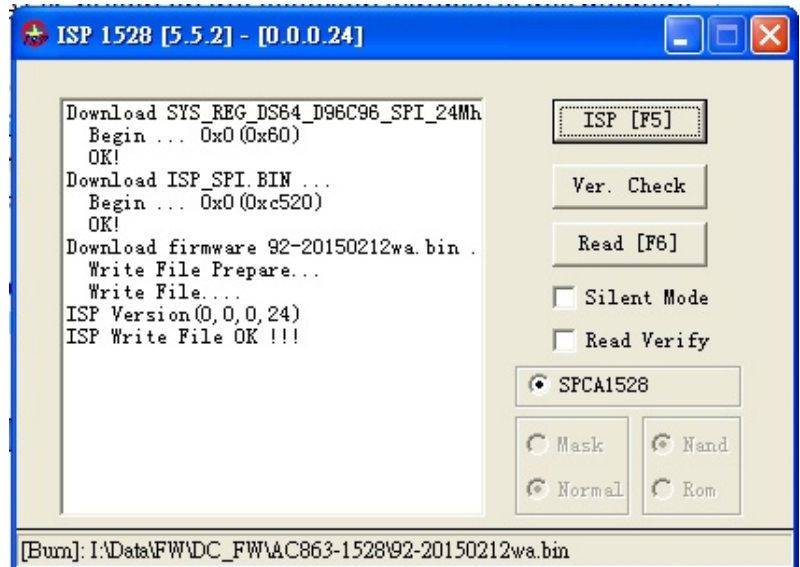
- F. Ready the Camera unit which is set in PW-OFF mode and connect the USB cable to PC. Then, push the main power switch ON the unit. Meanwhile, press and hold the OK and Pic/Video Mode keys together and then, touch the CAM-PW key. Now, the camera is forced to Programming Mode and you will observe the small LED light is staying ON. You need to wait for a minute until the PC will install the camera driver itself and completed automatically.

Press the OK button on the Selected File screen to start the programming. Wait for a prompt with ISP Write File “OK” popup and the small LED light goes to OFF itself.

In case you can not enter the Programming mode as above described, send email to ask further support.

Congratulation! It means the FW has been upgraded successfully.

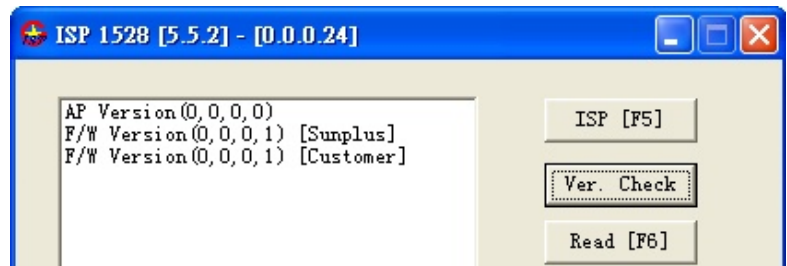
- G. Unplug USB cable and switch off the Main Power.



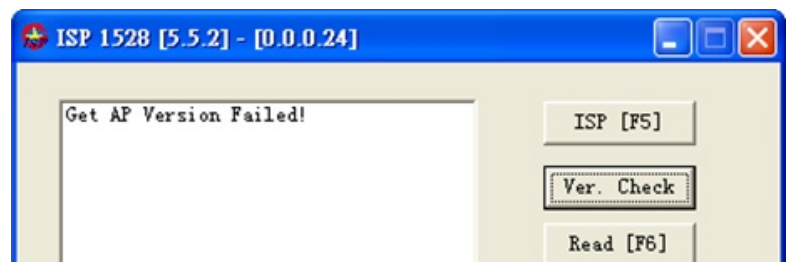
Trouble Shoot

1. If the Step G does fail, you just need to unplug the USB from camera. And then repeat the Step F to try again. Before starting programming, you have to re-check the contents in 3 fields to be same as the advised.

2. In case you are not sure if you have installed the Camera USB driver successfully or not under the **camera program mode**, you can press the [Ver.Check] key before pressed the [ISP]. You will get a FW code as the right if driver is installed. Now you can press the [ISP] to continue until to finish.



3. Once you got a result as the right prompt, you have to check if the camera small LED is staying ON. If Yes, the Camera driver was not installed properly. If No, your operation might be wrong and the camera is not entered to the



Programming Mode yet. Just repeat step F to turn the Camera to the proper mode.

4. Sometimes, you might install the FW successfully but you could not see the Camera screen ON and camera operation seems incorrectly. You have to check if you have installed for a wrong FW. It is not a matter. Just do it again for a programming with the correct FW.